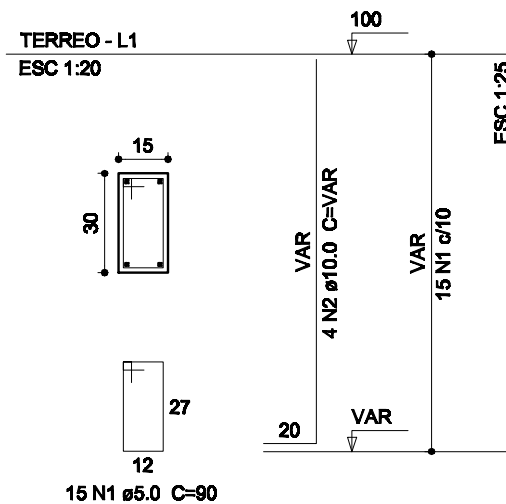
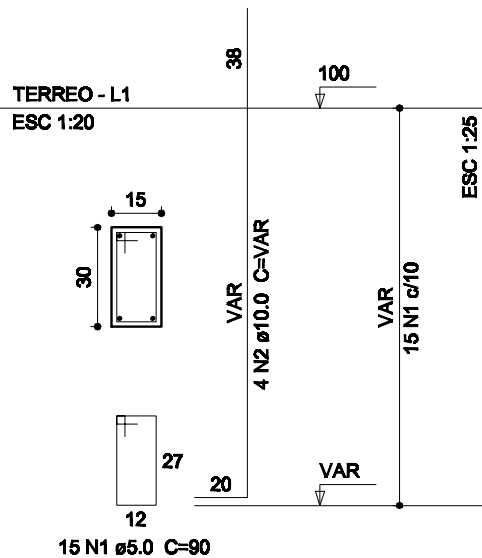


P1=P2=P3=P4=P5=P6=P7=P8=P9=P15=P19

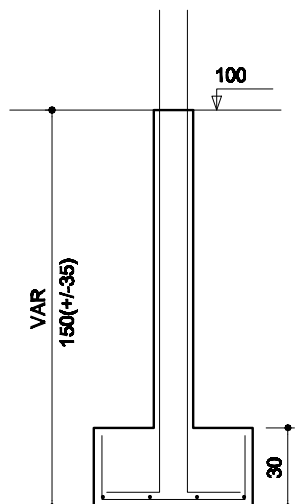
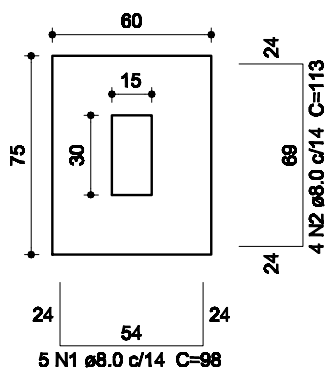
P11=P13=P16=P18



S1=S2=S3=S4=S5=S6=S7=S8=S9=S11=S13=S15
=S16=S18=S19

PLANTA
ESC 1:25

CORTE
ESC 1:25



Solo compactado sobre a sapata
peso específico > 1600.00 kgf/m³

PREFEITURA MUNICIPAL DE LINDÓIA DO SUL

Proj. Estrutural - Ampliação do NUCLEO DE EDUCAÇÃO INFANTIL

01/03