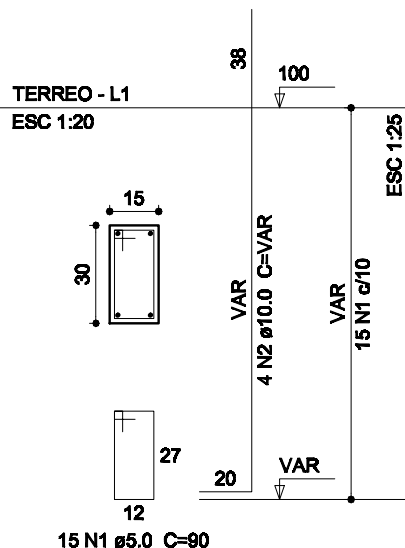
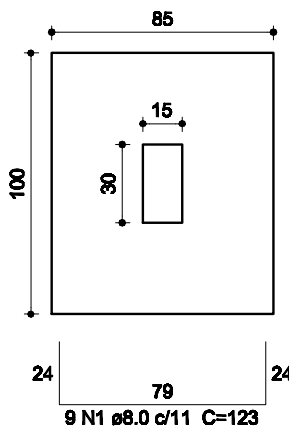


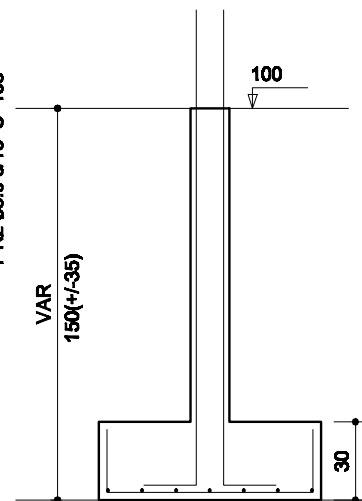
P12



S12
PLANTA
ESC 1:25



CORTE
ESC 1:25



Solo compactado sobre a sapata
peso específico > 1600.00 kg/m³

Resumo do aço

AÇO	DIAM (mm)	C.TOTAL (m)	PESO + 10 % (kg)
CA50	8.0	199.9	86.8
	10.0	147.9	100.3
CA60	5.0	256.5	43.5
PESO TOTAL (kg)			
CA50	187.1		
CA60	43.5		

Volume de concreto (C-25) = 1.28 m³

Volume de concreto (C-20) = 2.77 m³

Área de forma = 41.58 m²

PREFEITURA MUNICIPAL DE LINDÓIA DO SUL

Proj. Estrutural - Ampliação do NUCLEO DE EDUCAÇÃO INFANTIL

03/03