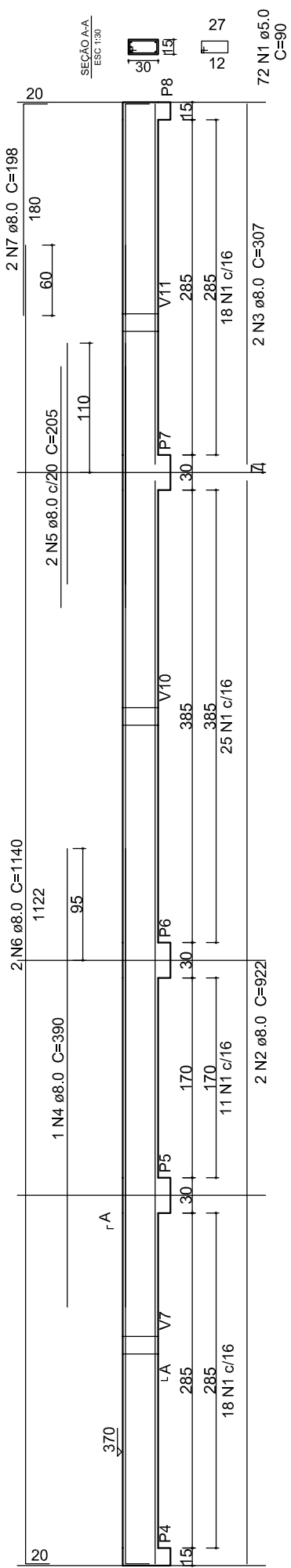
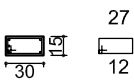


V2
ESC 1:25

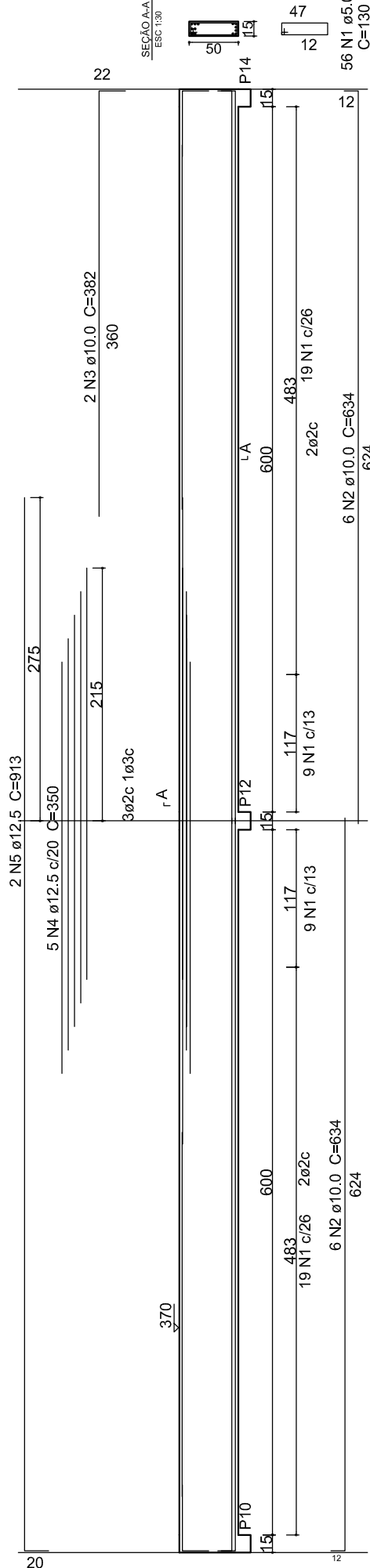


SEÇÃO A-A
ESC 1:30

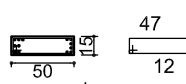


72 N1 ø5.0
C=90

V4
ESC 1:25



SEÇÃO A-A
ESC 1:30



56 N1 ø5.0
C=130

PREFEITURA MUNICIPAL DE LINDÓIA DO SUL

Proj. Estrutural - Ampliação do NUCLEO DE EDUCAÇÃO INFANTIL

02/05