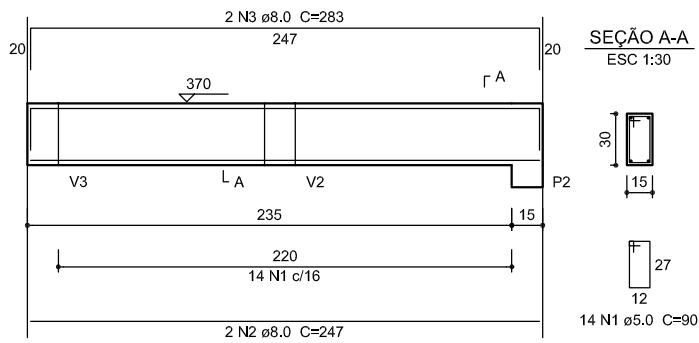


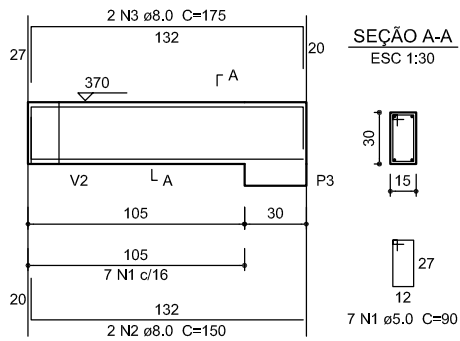
V10

ESC 1:25



V11

ESC 1:25



Resumo do aço

AÇO	DIAM (mm)	C.TOTAL (m)	PESO + 10 % (kg)
CA50	8.0	209.7	91
	10.0	147.5	100
	12.5	60.9	64.5
CA60	5.0	404.3	68.5
PESO TOTAL (kg)			
CA50	255.5		
CA60	68.5		

Volume de concreto (C-25) = 4.21 m³
Área de forma = 67.67 m²

PREFEITURA MUNICIPAL DE LINDÓIA DO SUL

Proj. Estrutural - Ampliação do NUCLEO DE EDUCAÇÃO INFANTIL

05/05