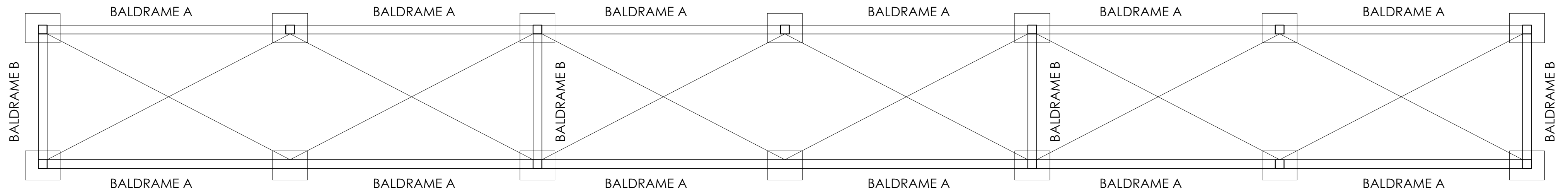
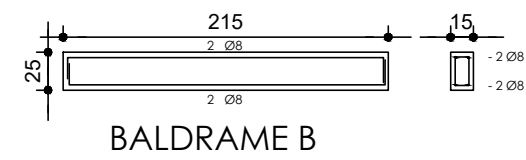
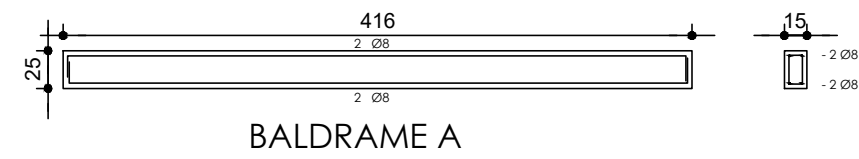
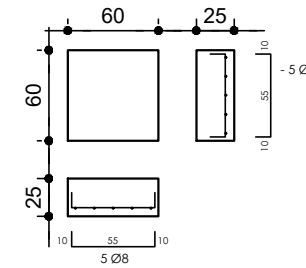
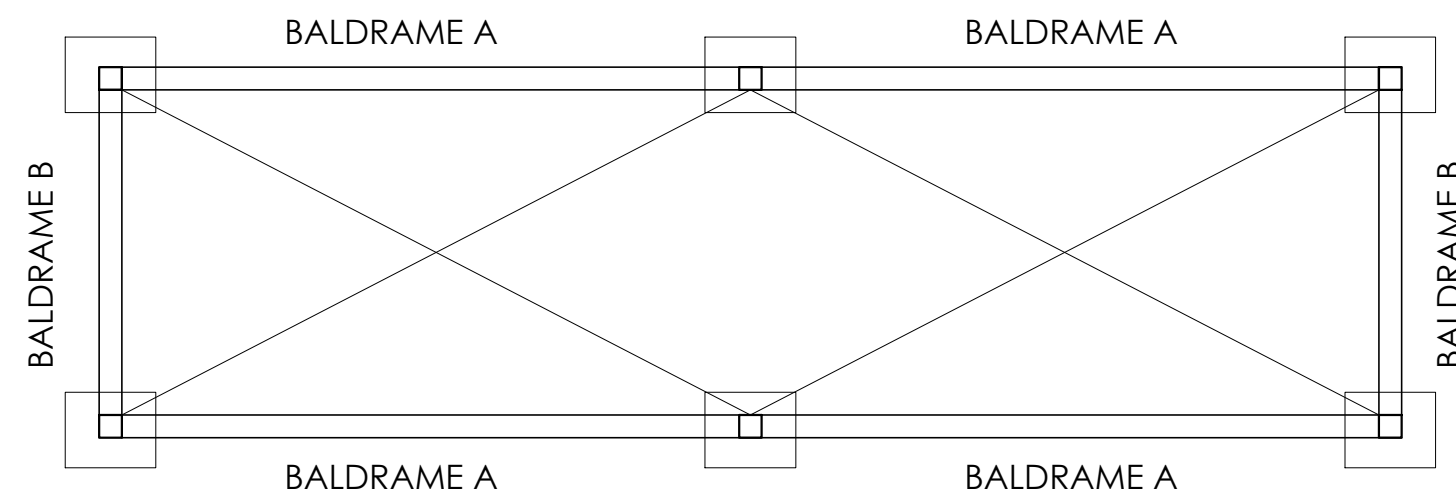


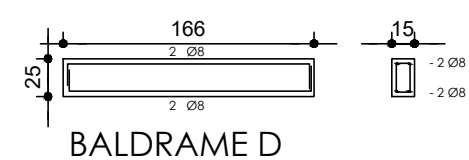
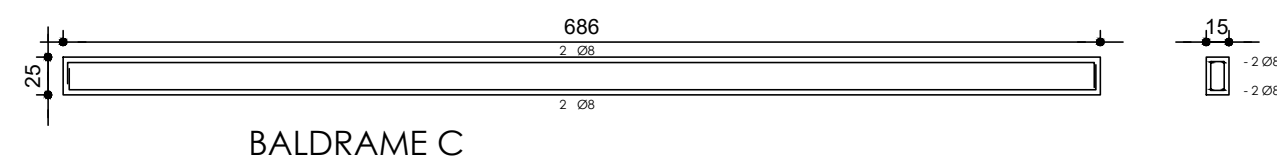
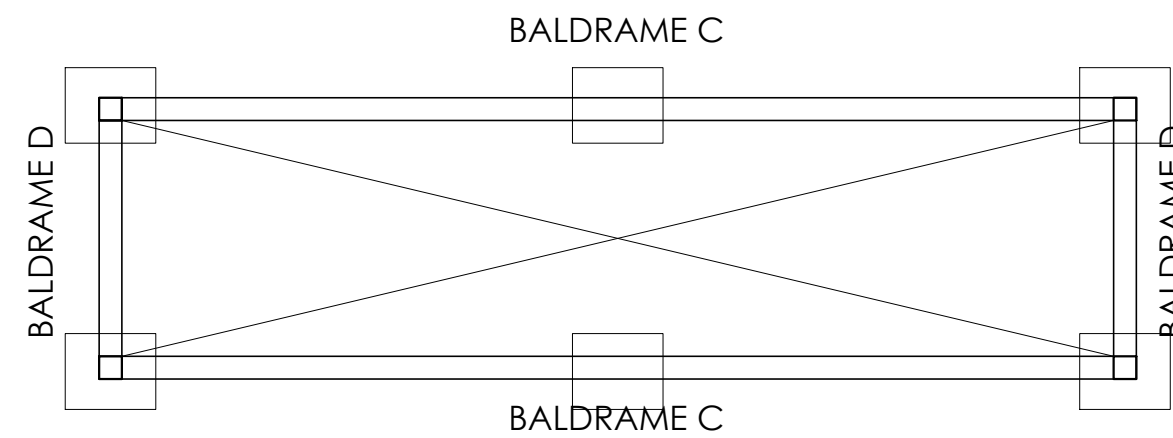
MÓDULO TRIPLO (X1)



MÓDULO SIMPLES (X3)



OSSUÁRIO (X3)



MUNICÍPIO DE LINDÓIA DO SUL

município de lindóia do sul responsável técnico

Rua David Bertol
 referência
 CEMITÉRIO VERTICAL SUSTENTÁVEL
 estrutural gavetários e ossuários
 município de lindóia do sul
 rua tamararé, 98
 bairro centro
 89735 000 lindóia do sul SC
 fone 49 3446 1177
 engenharia@lindoiadosul.sc.gov.br
 www.lindoiadosul.sc.gov.br
 gabriela fernanda grisa
 cau A72691-5
 escala
 INDICADA
 data
 MAR/2021
 fase
 PROJETO
 desenho
 GABRIELA
 arquivo
 CMV_R01

